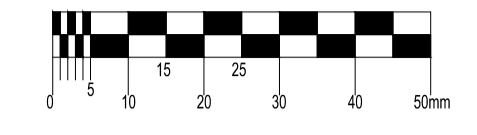
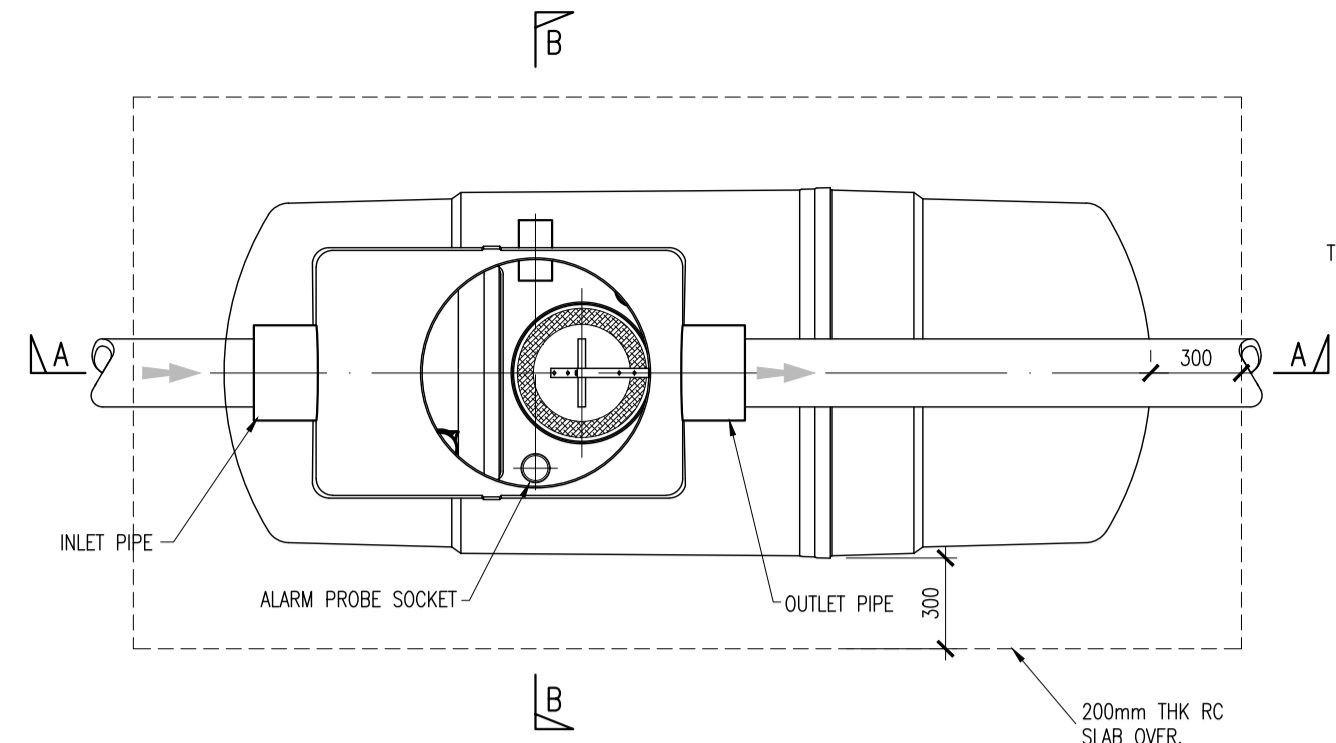
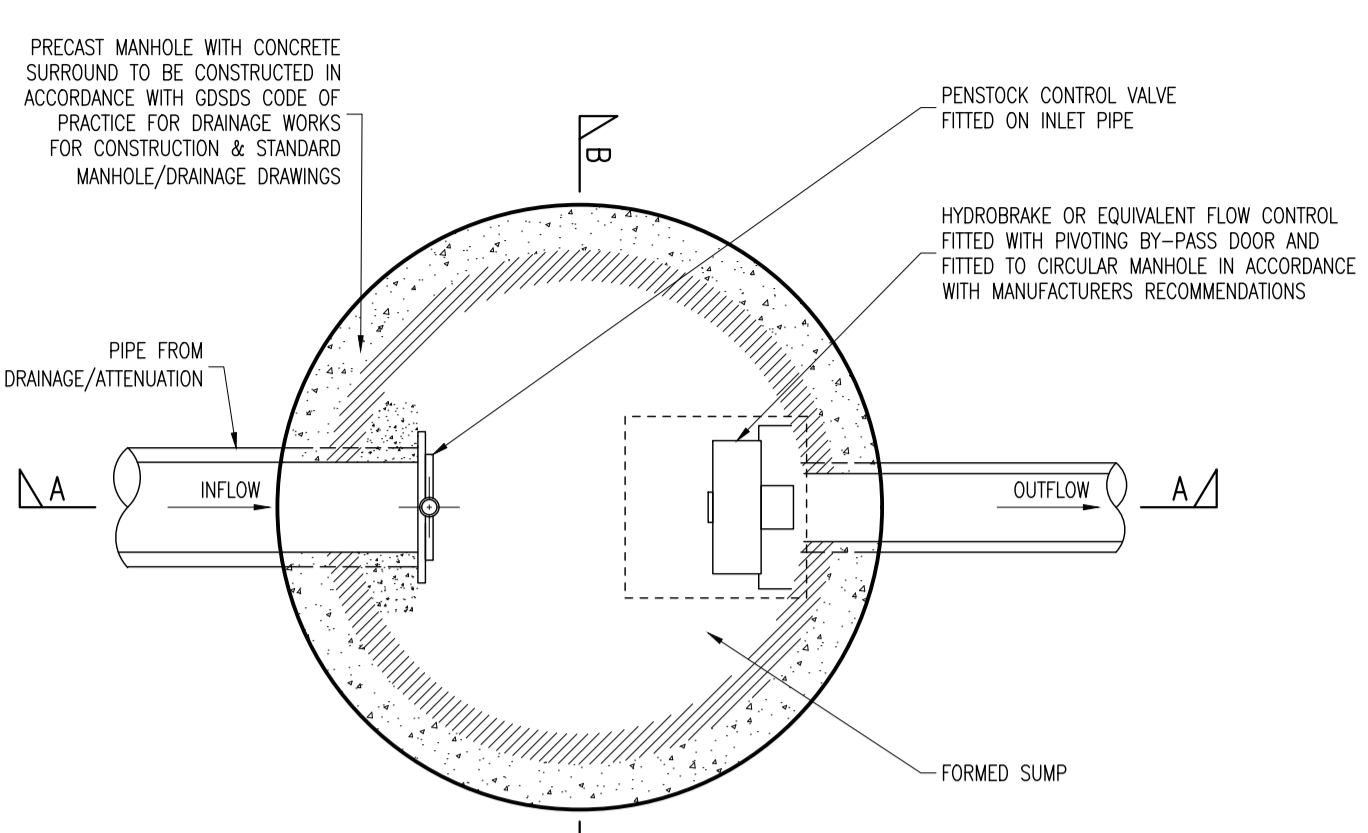


ON ORIGINAL



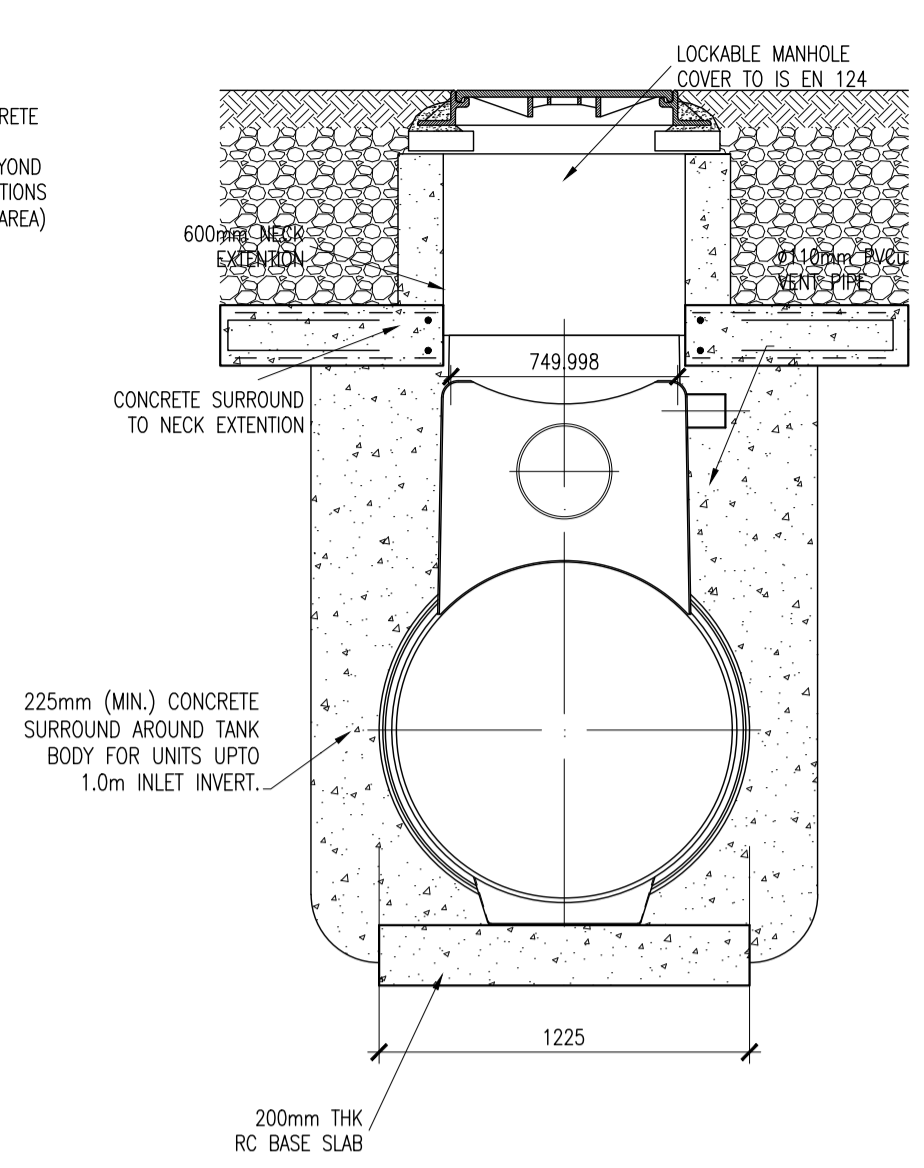
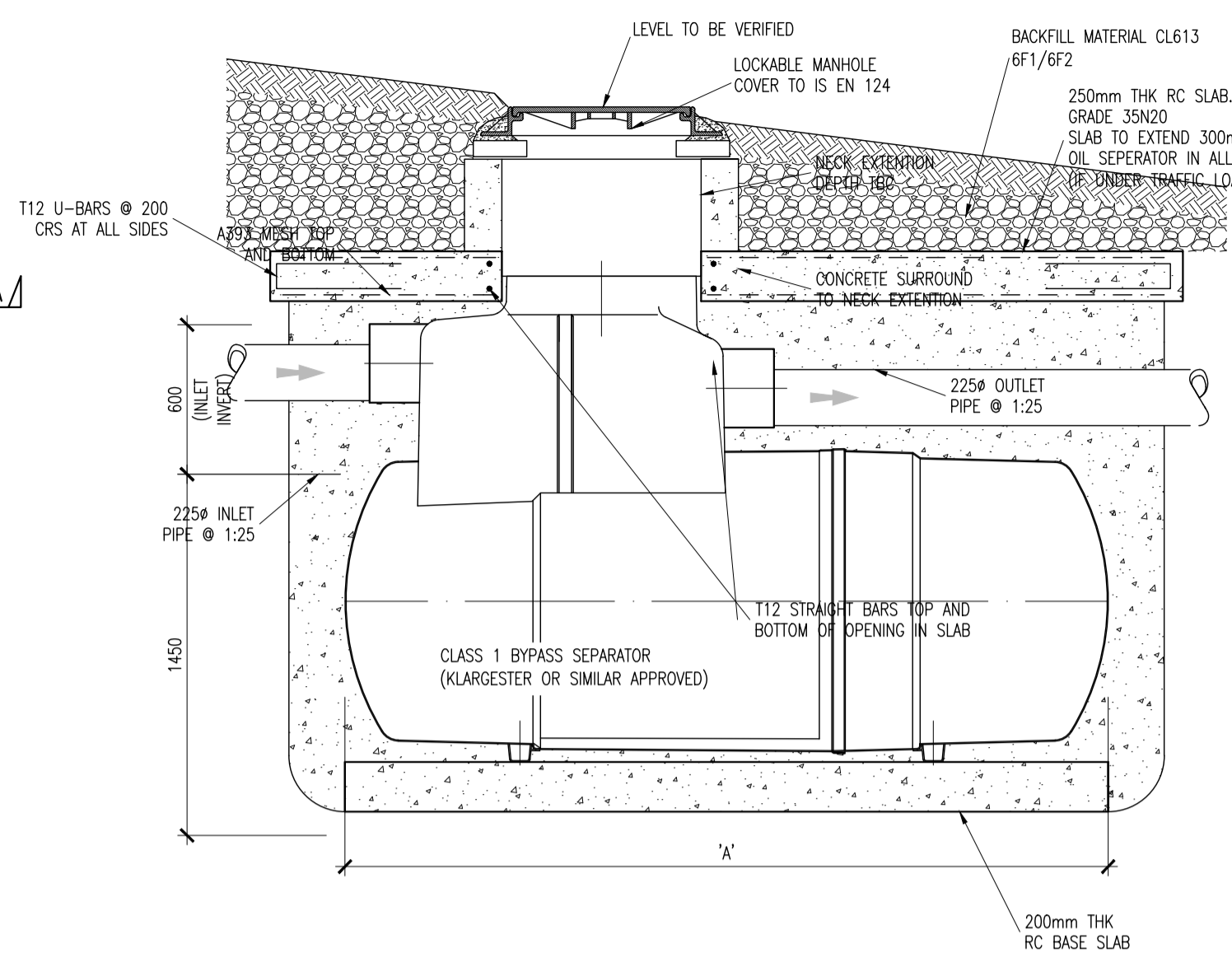
NOTES:

1. WATERMAIN TO BE 150/100mm DIA. PVC-A TO BS PAS27 (MIN. 10 BAR) EXCEPT UNDER ROADWAYS WHERE DUCTILE IRON IS TO BE USED.
2. AT 90 DEG. TURNS USE 2 No. 45 DEG. BENDS.
3. MINIMUM COVER TO WATERMAIN TO BE 900mm.
4. SPIGOT SOCKET CONNECTIONS TO BE USED AT PVC-A/DUCTILE IRON JUNCTIONS.
5. ANCHOR BLOCKS TO BE POSITIONED AT DEAD ENDS, TEES, BENDS AT EACH SIDE OF HYDRANTS AND VALVES.
6. HYDRANT OUTLET TO BE 200mm BELOW GROUND LEVEL UNLESS REQUESTED OTHERWISE.
7. HYDRANTS SHALL BE MANUFACTURED IN ACCORDANCE WITH BS 750: 2006 TYPE 2 AND SHALL INCORPORATE A SCREWDOWN VALVE, UNDERGROUND "GUIDE IN LOAD" TYPE WITH BAYONET LEG OUTLETS AND FABE SPINDLE CAP OF CAST IRON AND IRON CHAIN. HYDRANT VALVE SHALL BE "ANTI CLOCKWISE OPENING".
8. SLUICE VALVES SHALL COMPLY WITH THE REQUIREMENT OF BS5163. THEY SHALL "CLOSE BY TURNING ANTI CLOCKWISE".
9. ALL SERVICE PIPES, CONNECTIONS AND WATER CONTROL UNITS SHALL BE AS PER OVERSEEING LOCAL AUTHORITY REQUIREMENTS.
10. ALL WATERMANS SHALL BE TESTED IN ACCORDANCE WITH SPECIFICATION & LOCAL OVERSEEING AUTHORITIES GUIDELINES FOR DRINKING WATER SUPPLY.
11. CONNECTION TO EXISTING WATERMAIN TO BE CO-ORDINATED WITH LOCAL OVERSEEING AUTHORITY.
12. CONTRACTOR TO LIASE WITH LOCAL OVERSEEING AUTHORITY FOR TESTING, CLEANING AND STERILISATION OF NEW WATERMANS.
13. ALL WORKS TO BE CONSTRUCTED IN ACCORDANCE WITH THE NRA SPECIFICATION FOR ROAD WORKS UNLESS OVERRIDDEN BY LOCAL OVERSEEING AUTHORITY'S STANDARDS.
14. ALL ROAD MARKINGS & SIGNS SHALL COMPLY FULLY WITH THE TRAFFIC SIGNS MANUAL PUBLISHED BY THE DEPARTMENT OF TRANSPORT, JUNE 2010.
15. SIGNS & MARKINGS: CONTRACTOR TO CONFIRM PRECISE SETTING OUT WITH EMPLOYERS REPRESENTATIVE PRIOR TO COMPLETION.
16. ALL SIGNS TO BE MOUNTED ON 76.1MM GALVANISED STEEL POSTS WITH COLOURED SLEEVES U.N.O. TO SPECIFICATION AND IN ACCORDANCE WITH THE TRAFFIC SIGNS MANUAL MOUNTING HEIGHT TO BOTTOM OF SIGN = 2.3M U.N.O.
17. ALL TRAFFIC MANAGEMENT TO COMPLY FULLY WITH THE PROVISIONS OF CHAPTER 8 OF THE TRAFFIC SIGNS MANUAL.
18. ALL CO-ORDINATES ARE TO ITM.
19. ALL LEVELS ARE TO ORDNANCE DATUM AND ARE IN METRES.
20. ALL EXISTING SIGNS (INCLUDING POLES) AND MARKINGS TO BE TAKEN UP OR COVERED AND TEMPORARY MEASURES APPLIED IN ACCORDANCE WITH CONTRACTORS TRAFFIC MANAGEMENT PLAN. THE CONTRACTOR MAY USE EXISTING SIGNAGE AS PART OF THEIR TRAFFIC MANAGEMENT PLAN.
21. ALL PEDESTRIAN, CYCLE AND VEHICULAR ROUTES MUST BE RETAINED IN ACCORDANCE WITH APPROVED TRAFFIC MANAGEMENT PLAN.
22. ALL MATERIALS TO BE DISPOSED OFF SITE SHALL BE TAKEN TO A LICENSED FACILITY APPROVED BY THE LOCAL OVERSEEING AUTHORITY.



DIMENSIONS

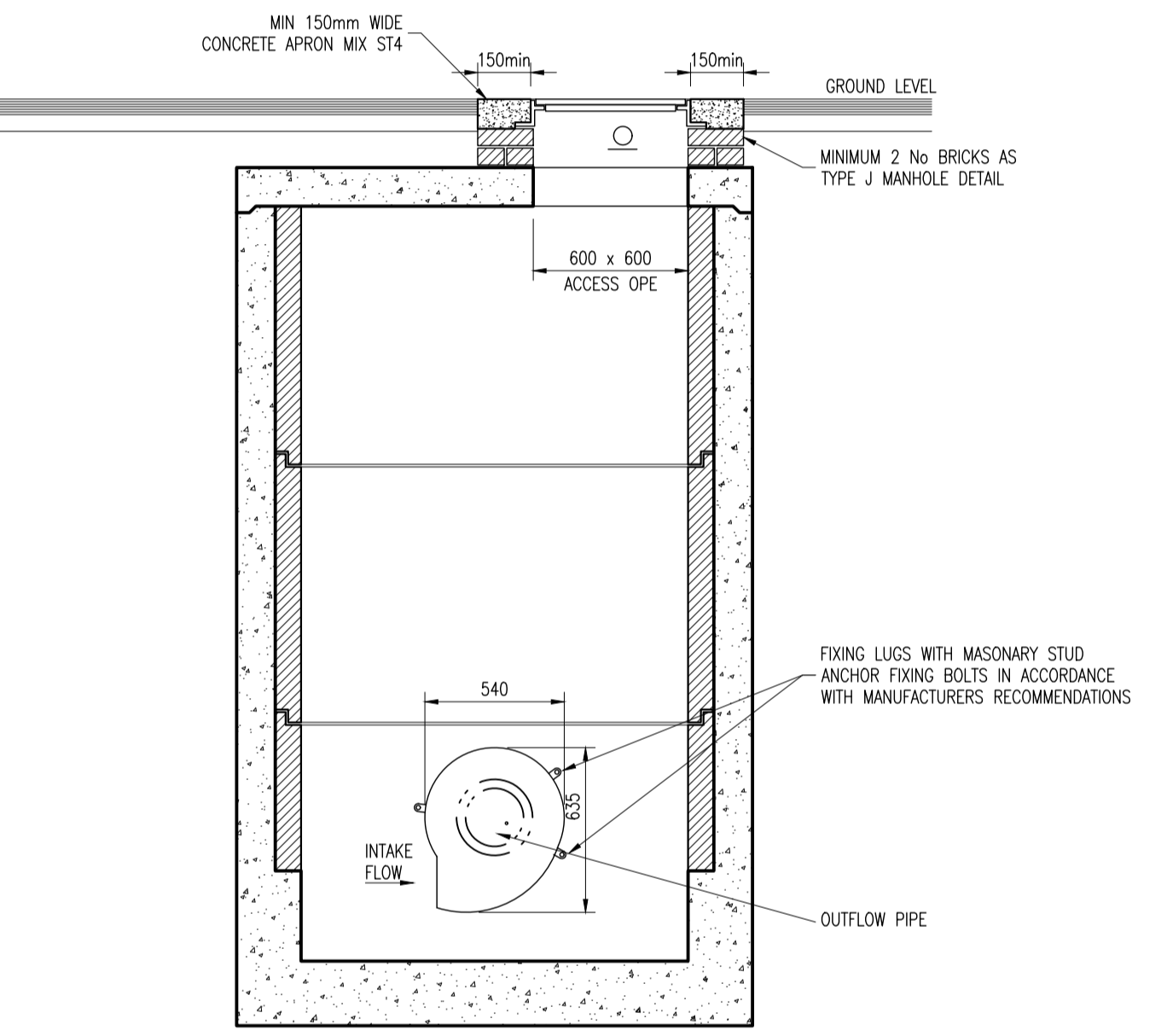
UNIT REF No.	NOMINAL FLOW	LENGTH	DIAMETER	STD. PIPE Ø	APPROX. EMPTY WEIGHT (KG)	FALL ACROSS UNIT
NSBP006	6 L/S	1700	1350	160	160	100
NSBP015	15 L/S	2947	1220	315	240	100



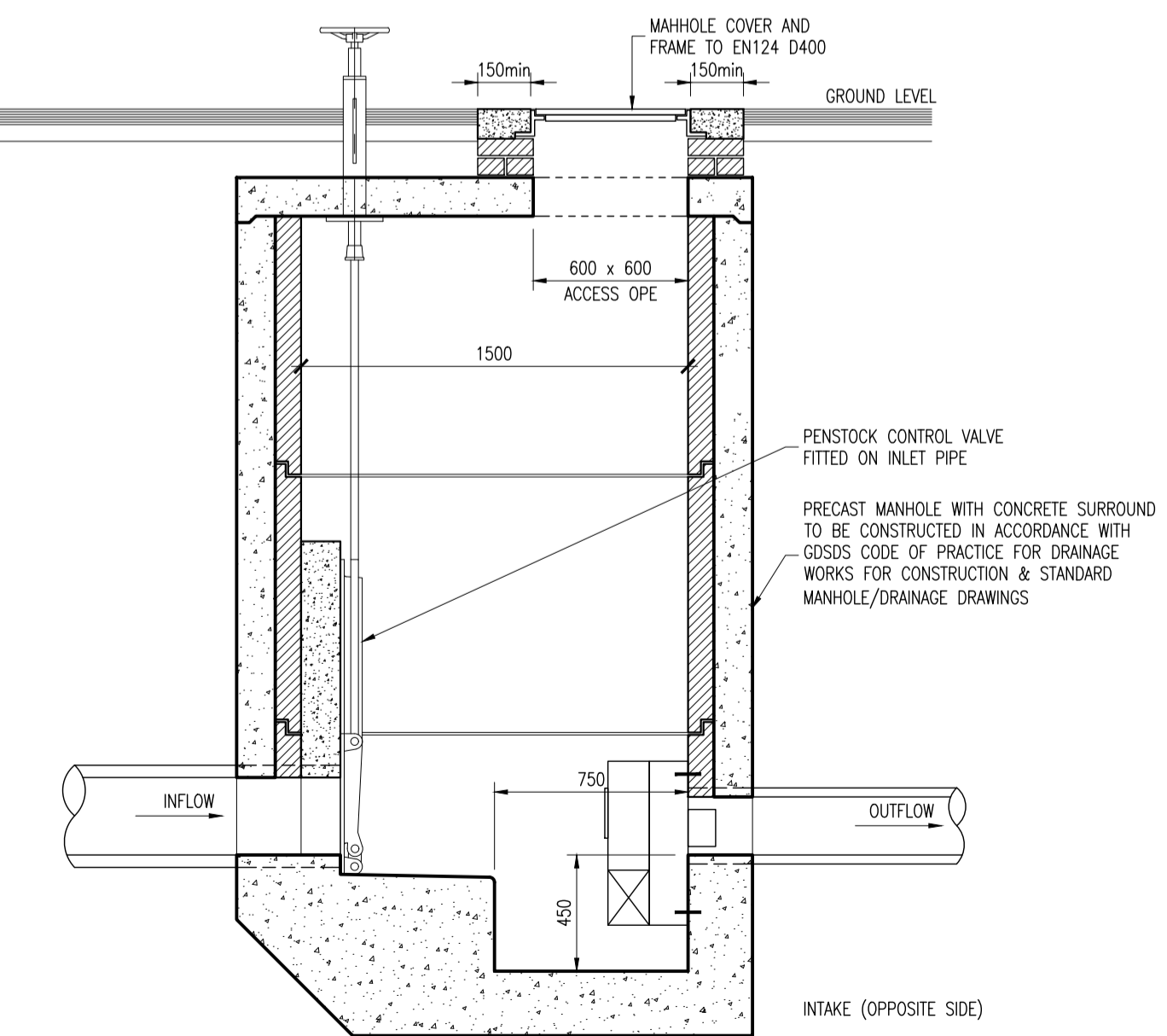
SECTION A-A

SECTION B-B

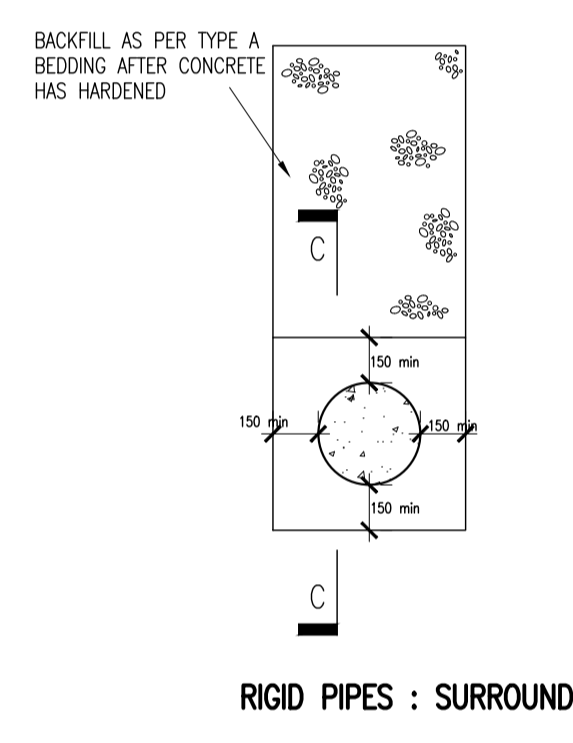
PETROL INTERCEPTOR DETAIL SCALE 1:25



SECTION A-A FLOW CONTROL MANHOLE DETAIL SCALE 1:25



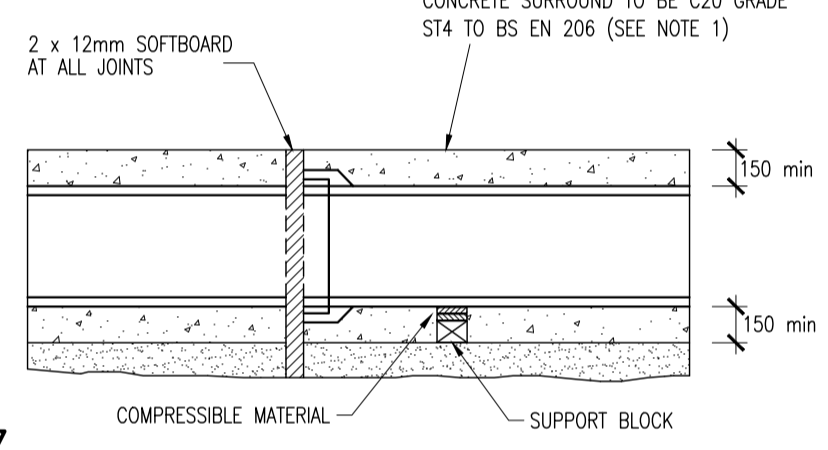
SECTION B-B FLOW CONTROL MANHOLE DETAIL SCALE 1:25



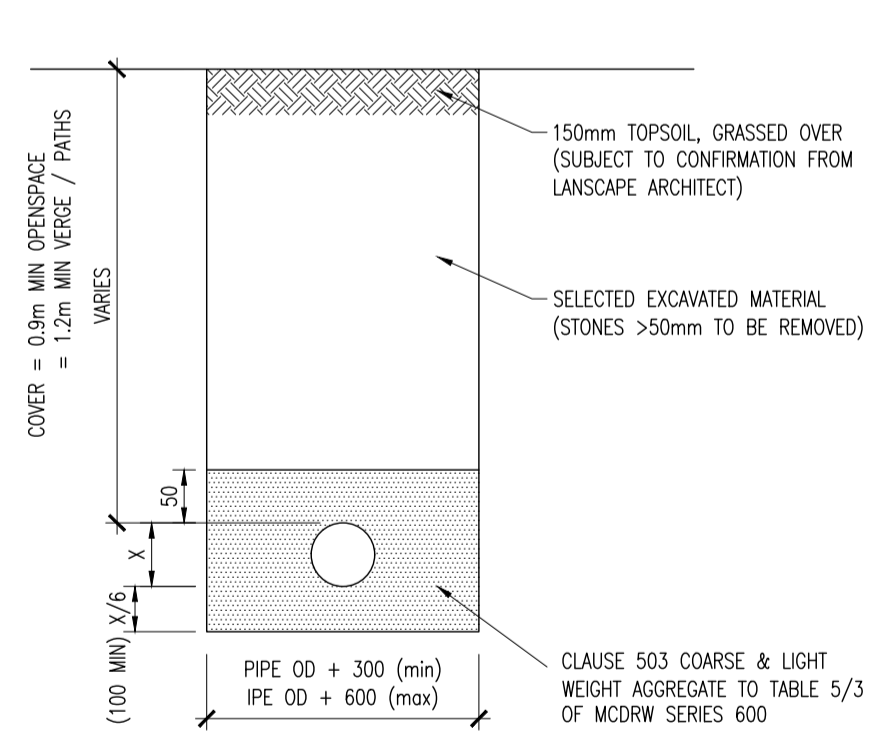
RIGID PIPES : SURROUND

CONCRETE BEDDING TO BE USED WHERE COVER LESS THAN 1.2m AND / OR AS DIRECTED BY THE ENGINEER (REFER TO LONGITUDINAL SECTIONS)

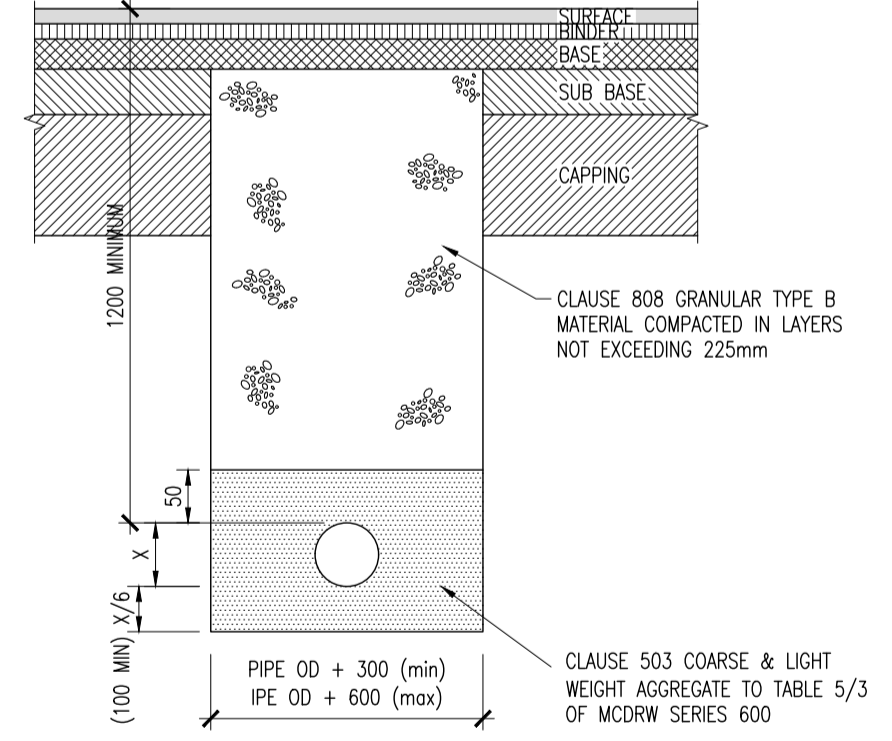
TYPE Z CONCRETE BEDDING/SURROUND (COVER 750mm - 1200mm)



SECTION C - C



A - BEDDING/BACKFILL DETAIL ACROSS OPEN SPACE (SIMILAR)



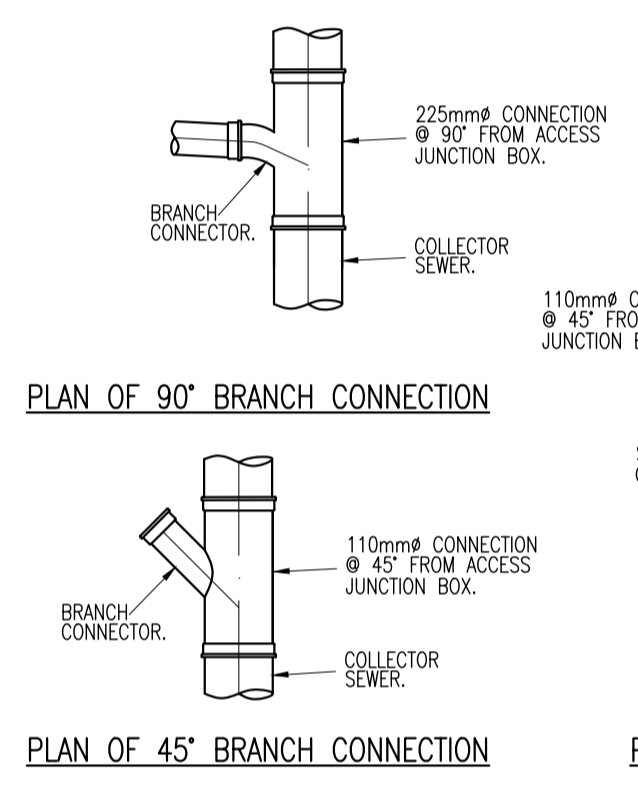
B - BEDDING/BACKFILL DETAIL IN ROADWAYS/VERGES/PATHS

- NOTES:
1. ALL DIMENSIONS ARE IN MILLIMETRES.
 2. DIMENSION X IS THE EXTERNAL DIAMETER OF THE PIPE (Ø225 = 301mm, Ø450 = 588mm & WIDER AT SOCKETS).
 3. THE MINIMUM AND MAXIMUM WIDTH OF THE TRENCH APPLIES ON AND BELOW A LINE 300mm ABOVE THE OUTSIDE TOP OF THE PIPE. ABOVE THE 300mm LINE THE TRENCH BACKFILL MATERIAL SHALL BE AS PER TYPICAL TRENCH DETAILS.
 4. BEDDING TO BE COMPACTED IN ACCORDANCE WITH SPECIFICATION & MANUFACTURERS RECOMMENDATIONS

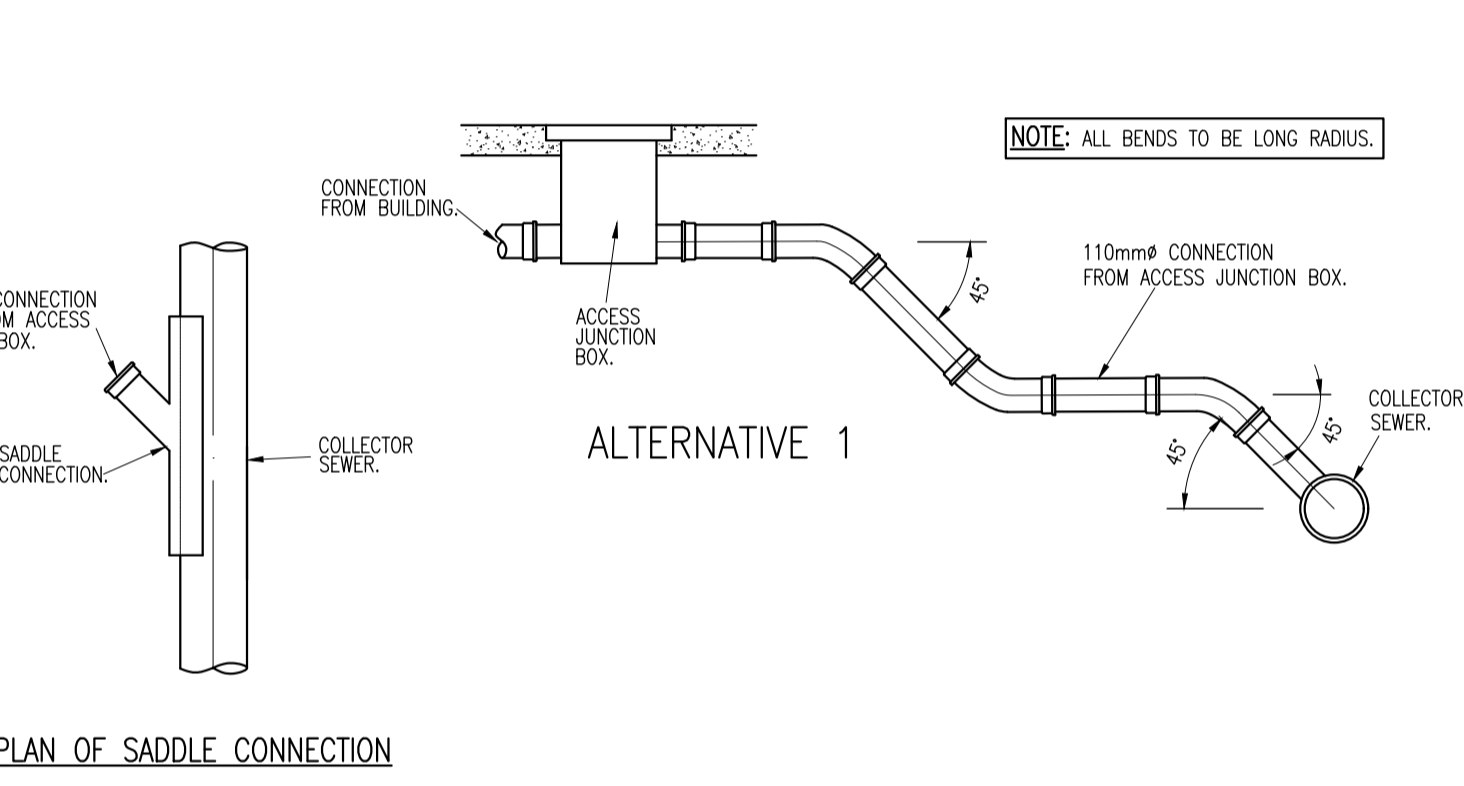
NOTE: FOR TRENCH BACKFILL/REINSTATEMENT DETAIL IN EXISTING ROADS REFER TO DRAWING 064011-3155

TYPE S (COVER > 1.2 METRES TO CROWN)

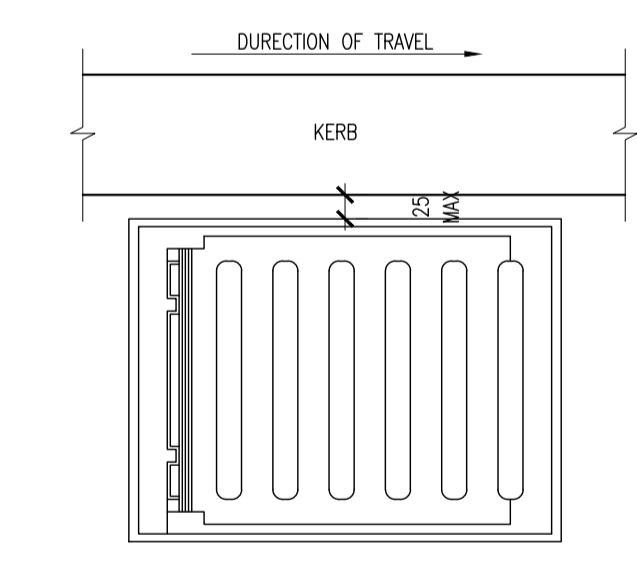
PIPE BEDDING DETAILS SCALE 1:25



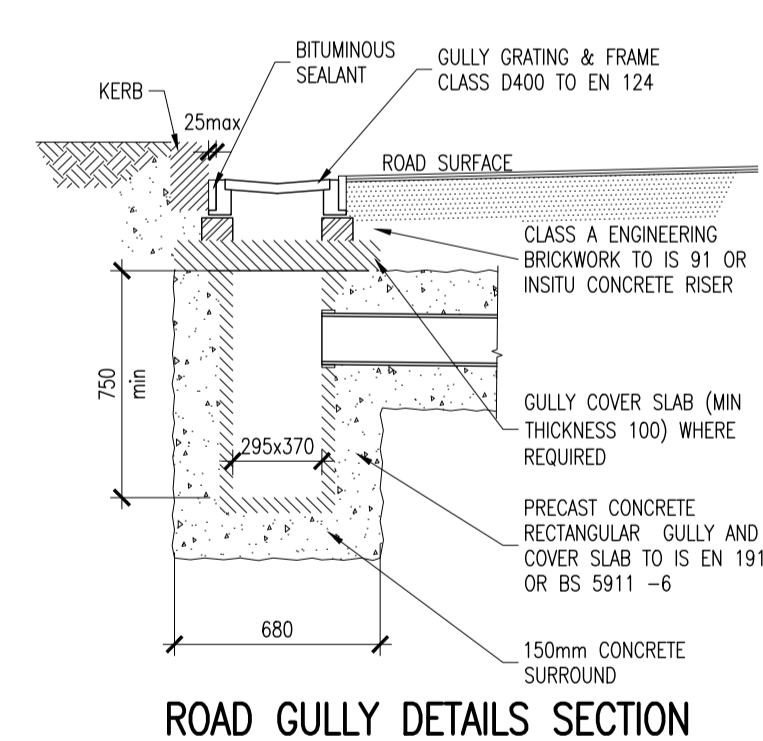
PIPE CONNECTION DETAILS



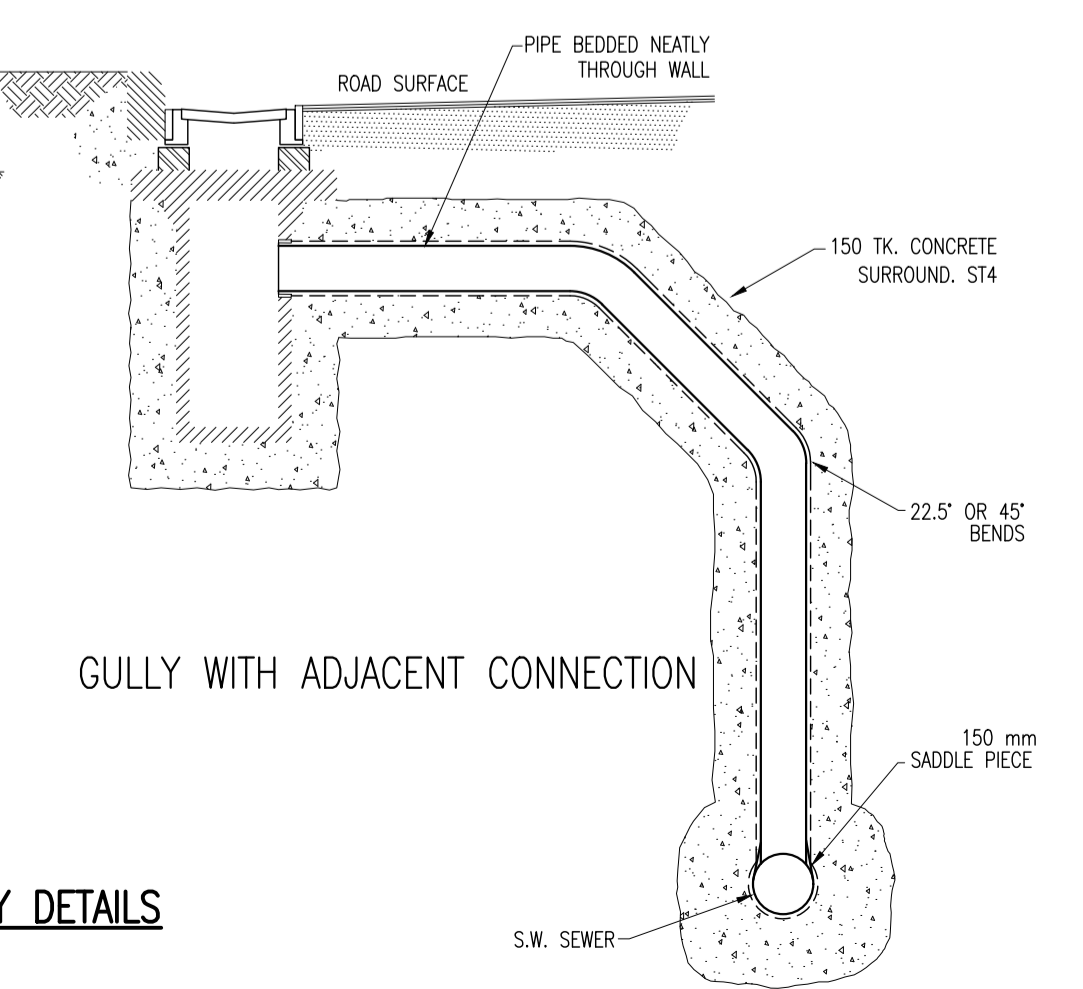
PIPE CONNECTION DETAILS



GULLY WITH CONNECTION ON OPPOSITE SIDE OF ROAD



ROAD GULLY DETAILS SECTION



GULLY WITH ADJACENT CONNECTION

ROAD GULLY DETAILS SCALE 1:25

rev	date	description	by	chkd.
P03	09-06-22	PLANNING SUBMISSION	ICJ	NOH
P02	23-02-22	Formal Submission	PLY	NOH
P01	21-01-22	FOR PLANNING	PLY	NOH

client approval: A - Approved, B - Approved with comments, C - Do not use

suitability: S4 - STAGE APPROVAL, issue purpose: PLANNING

DBFL Consulting Engineers
Civil, Structural & Transportation Engineering
www.dbfl.ie

DUBLIN OFFICE: Ormond House, Upper Ormond Quay, Dublin 7, D07 W9T4
PHONE: +353 (0) 1 406 4000

CORK OFFICE: Phoenix House, Mahon Road, Cork, T12 H1XV
PHONE: +353 (0) 21 2054538

WATERFORD OFFICE: Suite 10 The Atrium, Maritime Gate, Canada Street, Waterford, X91 W028
PHONE: +353 (0) 51 309 500

project ref: BALLYOULSTER KDA SHD - PHASE 1 RESIDENTIAL DEVELOPMENT

drawing title: SURFACE WATER TYPICAL CONSTRUCTION DETAILS SHEET 2

client: KIERAN CURTIN, RECEIVER OVER CERTAIN ASSETS OF MAPLEWOOD DEVELOPMENTS UNLIMITED COMPANY

designed by	author	scale	sheet size
GIS	RMG	AS SHOWN	A1

drawing no: 180221-DBFL-SW-SP-DR-C-5001 P03